

Endoscopic ultrasonography is useful in the diagnosis and treatment of rectal neuroendocrine neoplasms: a case series

Qing GU^{†1}, Yi-ming LIN², Li CEN², Min XU³, Hong-zhang LI⁴, Xian-chu LIN⁴, Chao LU²

¹Center of Endoscopy, the First Affiliated Hospital, School of Medicine, Zhejiang University, Hangzhou 310003, China

²Department of Gastroenterology, the First Affiliated Hospital, School of Medicine, Zhejiang University, Hangzhou 310003, China

³Center of Information, the First Affiliated Hospital, School of Medicine, Zhejiang University, Hangzhou 310003, China

⁴Department of Gastroenterology, People's Hospital of Sanmeng County, Taizhou 317100, China

[†]E-mail: 1191016@zju.edu.cn

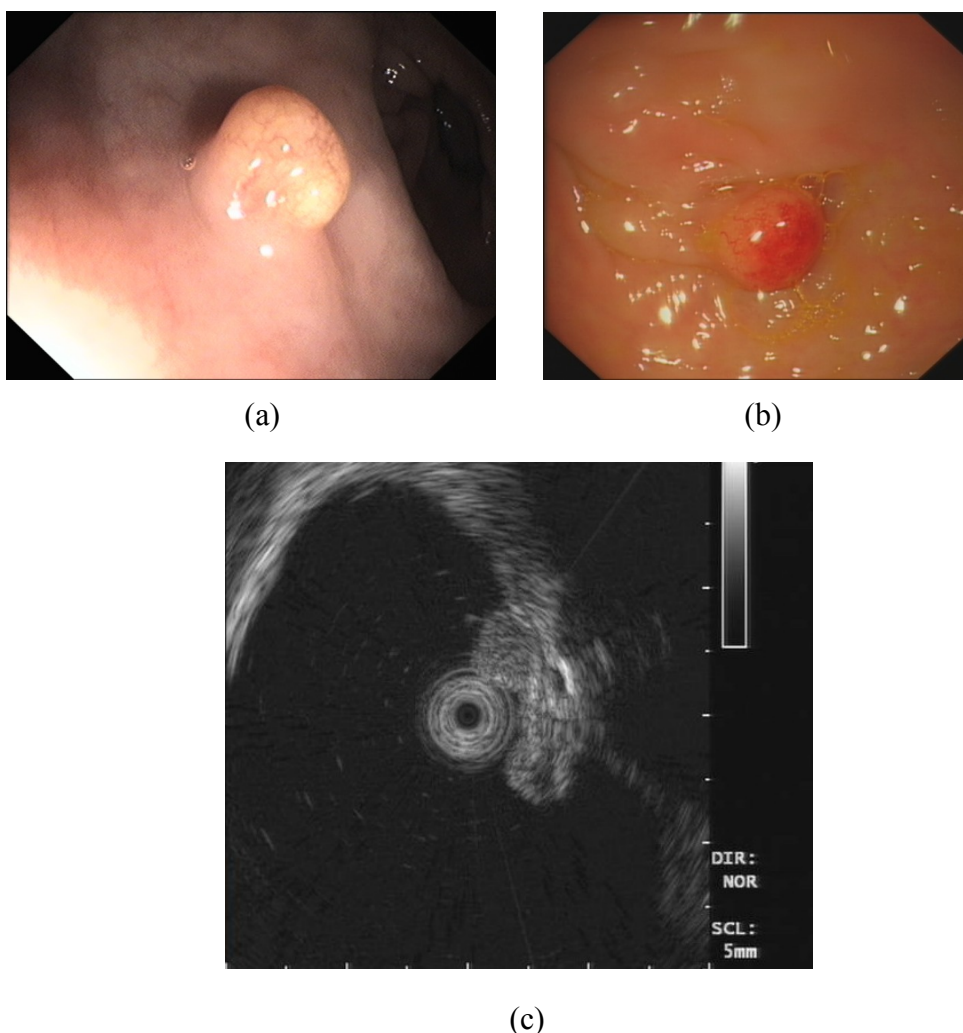


Fig. S1 Colonoscopic images of rectal NENs

- (a) Conventional colonoscopy showing a representative protruding granular lesion with white-to-gray surface color. (b) Surface of the lesion showing rich submucosal vascular network. (c) EUS showing an analogous round lesion with moderate hyperecho, originating from both the deep mucosa and submucosa layers