

**Supplemental Materials:**

**PGC-1 $\alpha$  coordinates with Bcl-2 to control the cell cycle in U251 cells through reducing ROS**

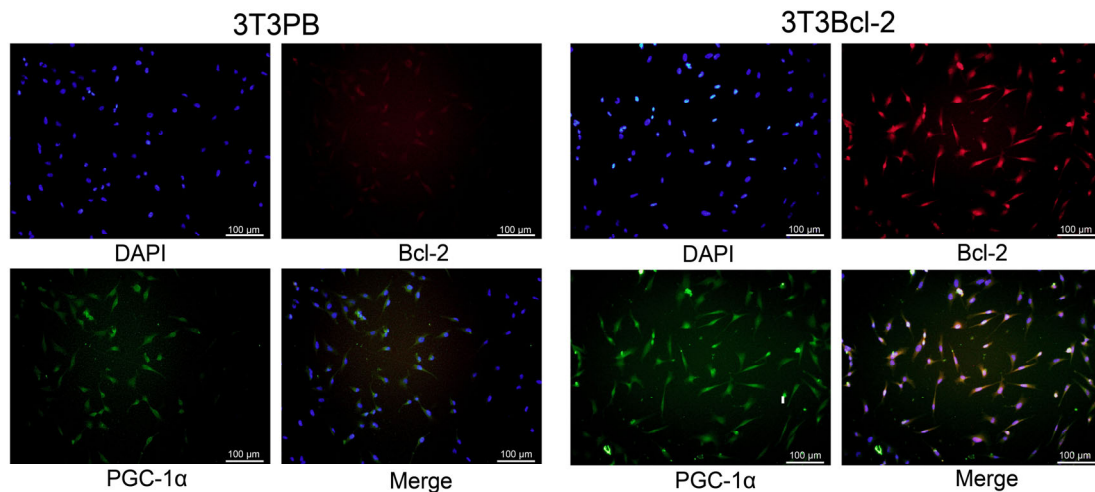
Kun YAO<sup>1,2,3</sup>, Xu-feng FU<sup>1,4</sup>, Xing DU<sup>1,4</sup>, Yan LI<sup>1</sup>,  
Shan-shan YANG<sup>1,2</sup>, Min YU<sup>1,2</sup>, Qing-hua CUI<sup>1,2</sup>

<sup>1</sup>*School of Life Sciences, Yunnan University, Kunming 650091, China*

<sup>2</sup>*Key Laboratory for Biochemistry and Molecular Biology of High Education in Yunnan Province, Yunnan University, Kunming 650091, China*

<sup>3</sup>*Medical School, Xijing University, Xi'an 710123, China*

<sup>4</sup>*Key Laboratory of Fertility Preservation and Maintenance of Ministry of Education, Department of Biochemistry and Molecular Biology, Ningxia Medical University, Yinchuan 750004, China*



**Fig. S1 Immunofluorescence images of PGC-1 $\alpha$  and Bcl-2 protein co-localization in NIH3T3 cells**