

Potential effect of EGCG on the anti-tumor efficacy of metformin in melanoma cells

An'an XU¹, Jeehyun LEE¹, Yueling ZHAO¹, Yuefei WANG¹, Xiaoli LI², Ping XU¹

¹Department of Tea Science, Zhejiang University, Hangzhou 310058, China

²College of Biosystems Engineering and Food Science, Zhejiang University, Hangzhou 310058, China

Table S1 qRT-PCR primer sequences (5' to 3')

Gene	Primer sequences (5' to 3')
<i>β-actin</i>	F: AGTGTGACGTTGACATCCGT
	R: GCAGCTCAGTAACAGTCCGC
<i>Il-6</i>	F: GAAACCGCTATGAAGTTCCTCTCTG
	R: TGTTGGGAGTGGTATCCTCTGTGA
<i>Il-10</i>	F: TTTAAGGGTTACTTGGGTTGCC
	R: AATGCTCCTTGATTCTGGGC
<i>Tnf-α</i>	F: CCCTCACACTCAGATCATCTTCT
	R: GCTACGACGTGGGCTACAG
<i>Sod1</i>	F: ATGTGACTGCTGGAAAGGACG
	R: CGCAATCCCAATCACTCCAC
<i>Sod2</i>	F: TCCCAGACCTGCCTTACGACT
	R: CCCTTAGGGCTCAGGTTTGTGTC
<i>Cat</i>	F: TCACTCAGGTGCGGACATTCT
	R: GTTCTTAGGCTTCTCAGCGTTGT
<i>Gpx1</i>	F: CCAGGAGAATGGCAAGAATGA
	R: GGAAGGTAAAGAGCGGGTGA

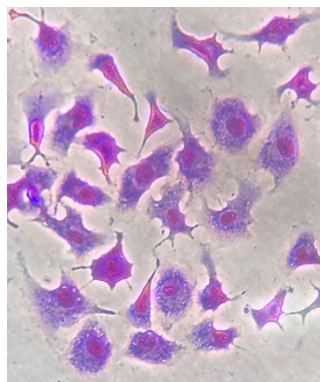


Fig. S1 Cell crystal violet staining of B16F10.